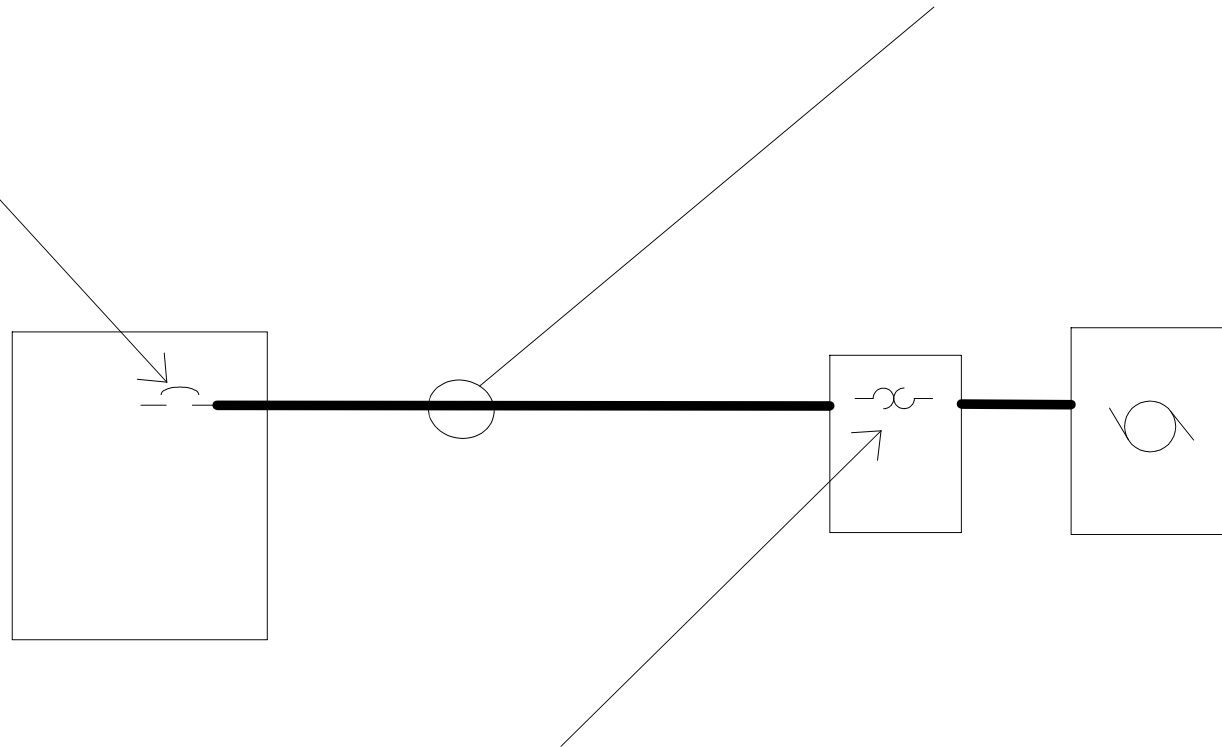


The overcurrent protection protects the branch circuit from short circuits and ground faults. This is for high fault short duration faults and is sized from Table 430.52 and the full load current, FLC, which is derived from Tables 430.247-250.

For continuous loads the wire size is = $FLC \times 1.25$



The overload protection protects the motor from prolonged overload conditions. It is sized from the name plate's full load amps, FLA, and 430.32.